

BEAR LAKE IMPROVEMENT BOARD NEWSLETTER II

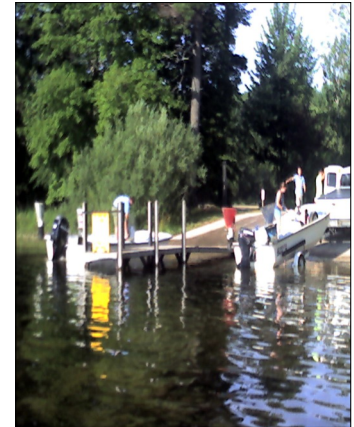
Fall 2019

INSIDE THIS ISSUE:

<i>Meet the BLIB Members:</i>	1
<i>Bear Lake: How Much EWM Can We Expect to Find?</i>	1
<i>Bear Lake EWM Treatment Over the Years:</i>	2

MEET THE BLIB MEMBERS:

- Bob Yates:** Chairman and Bear Lake Township Representative
- Rita Brisbin:** Secretary and Riparian Representative
- Dave Adams:** Treasurer and Pleasanton Township Representative
- Greg McPherson:** Bear Lake Village Representative
- Pauline Jaquish:** Manistee County Commissioner
- Gary Schwaiger:** Manistee County Drain Commissioner



BEAR LAKE: HOW MUCH EWM CAN WE EXPECT TO FIND?

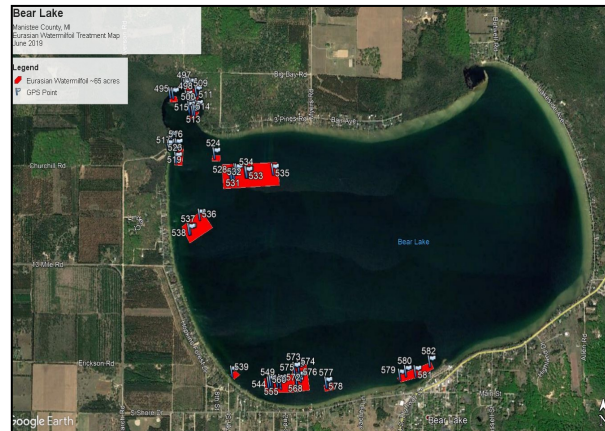
Bear Lake was initially treated for over 330 acres of EWM in 2008. Since then, the lake has been treated for anywhere from 7 to 75 acres on an annual basis. So the question becomes, what causes the variation and what can we expect in the future?

Little is known about the variation in acres of EWM found in Michigan Lakes from year to year. It is common to have new growth in the general area that we have found it and treated it in the past. It is generally thought that is due to roots spreading, propagation from segments of the plant drifting and re-rooting, or a dormant seed bed that comes from mature plants. Little is known about dormant seedbeds. Observation leads us to believe that seedbeds can remain dormant for seven to

ten years, but there is no specific research in the literature that substantiates this. Bear Lake has had wide variation in treatment areas over the years, but ultimately could grow back to in excess of 300 acres without careful management. Overall Bear Lake treatment has been highly successful resulting in very low assessments for a lake this large.

We at RLS feel that lake management that maintains EWM levels below 5% of the lakes surface areas are being managed successfully. Though EWM is an invasive plant that we want to minimize, it is a plant that is excellent fish cover in limited amounts. RLS surveys are the most intense in the consulting community but it is impossible to find every hidden stem of EWM.

RLS uses the latest science technologies including GPS location of EWM and Biobase to help quantify the bio-volume of all aquatic vegetation. We continue to strive to manage your lake in concert with the Bear Lake Improvement Board to maintain a healthy biodiversity of vegetation and minimize costs to riparians.



BEAR LAKE EWM TREATMENT OVER THE YEARS

YEAR	# EWM Acres Treated
2008	330
2009	11
2010	7
2011	11
2012	70
2013	10
2014	10
2015	29
2016	11
2017	17
2018	32
2019	75

NOTE: EWM cover changes annually due to winter ice conditions, ability of the seed bank to re-germinate, and climate conditions. A harsh winter will not always result in less EWM cover. EWM is a very aggressive aquatic plant that is exotic and has the potential to smother out all native aquatic plants if not well controlled. RLS is here to make sure the lake remains low in EWM as it can never be eradicated.



Restorative Lake Sciences
18406 W. Spring Lake Rd
Spring Lake, MI 49456

www.restorative-lakesciences.com